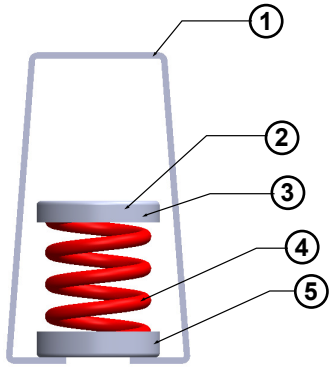


**VIBRATION ISOLATOR
HANGER
Model : PTH-S
INSTALLATION
OPERATION
AND
MAINTENANCE MANUAL**



Model: PTH-S

● **Component**

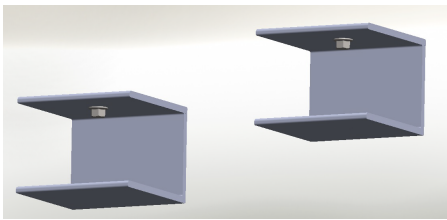


Model : PTH-S

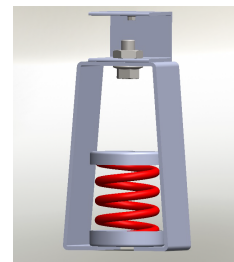
No.	Part
1	Hanger Box
2	Upper Hanger Cup
3	Upper Hanger Rubber Seat
4	Spring Element
5	Lower Hanger Rubber Seat

● **Installation**

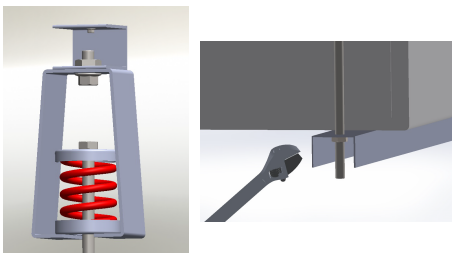
1. Install C channel steel at the ceiling.



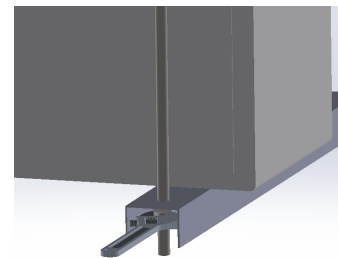
2. Install the spring hanger to the C channel steel by tightening a nut and washer on top hanger box.



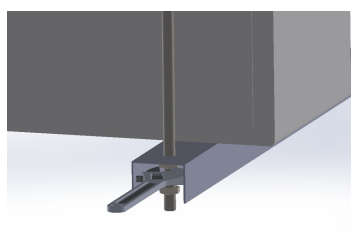
3. Install the equipment by using threaded studs to the spring hanger at the equipment base.



4. Adjust the height of the equipment by tightening the nuts under the base of the equipment.



5. Input an additional nut in each mounting point for double lock and complete installation.





TOZEN INDUSTRIAL CO., LTD.

3388/62 18TH FLOOR, SIRINRAT BLDG.,
RAMA IV RD., BANGKOK 10110 THAILAND
TEL : (66) 0-2029-0100
FAX : (66) 0-2029-0111
URL : www.tozen.co.th

TOZEN CORPORATION

8-4, ASAHI YOSHIKAWA
SAITAMA 342-008 JAPAN
TEL : 048-993-1030
FAX : 048-993-1038