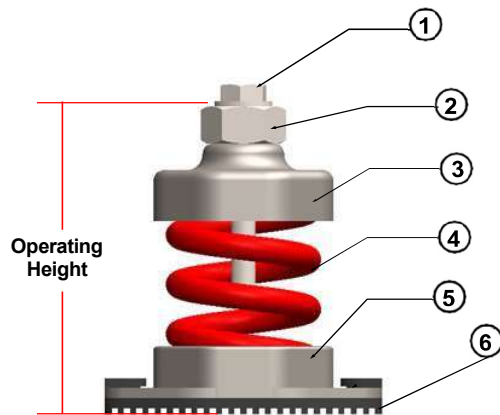


**VIBRATION ISOLATOR  
FLOOR MOUNT  
Model : PTM-A  
INSTALLATION  
OPERATION  
AND  
MAINTENANCE MANUAL**



## Model: PTM-A

### • Component

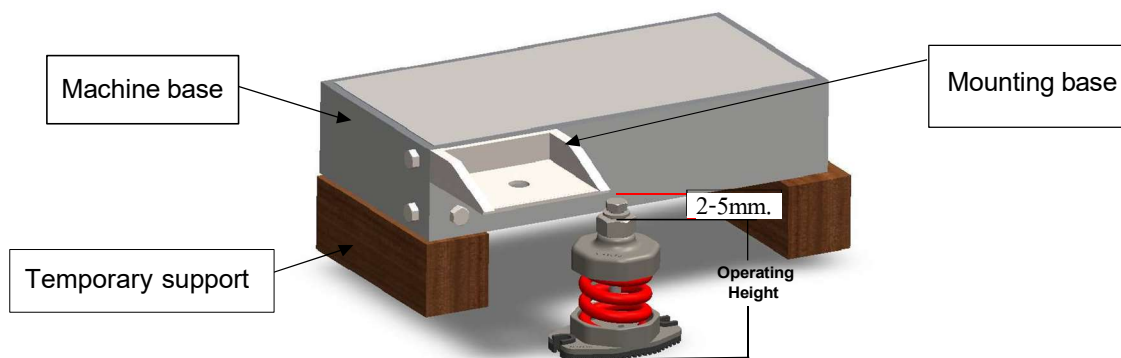


Model : PTM-A

No.	Part
1	Locking Cap Screw
2	Leveling Bolt
3	Upper Mounting Cup
4	Spring Element
5	Lower Mounting Cup
6	Rubber Pad

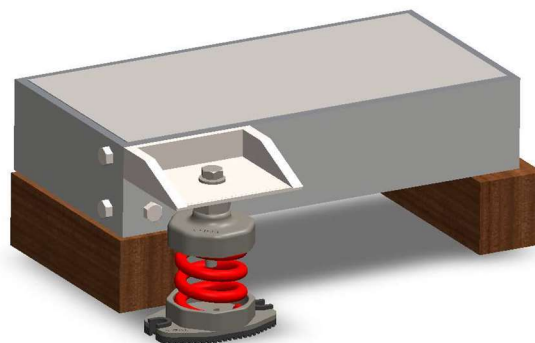
### • Installation

1. Place machine base and equipment on temporary support or lift equipment. There is a height between the floors. The base of the machine's legs is approximately 2-5mm higher than operating Height (H) of the vibration isolator (H value can be found in tozen catalog) There is a height between the floors. Recommended is at least 50 mm from the bottom of the case in case you want to control the height of the base

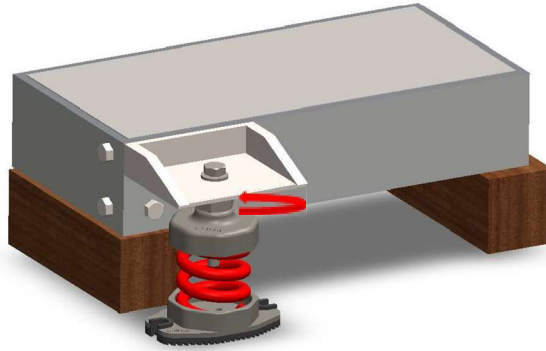


2. Connect the equipment to system and fill the system or add water(Vibration isolator should be at normal operating weight before adjusting the spring).

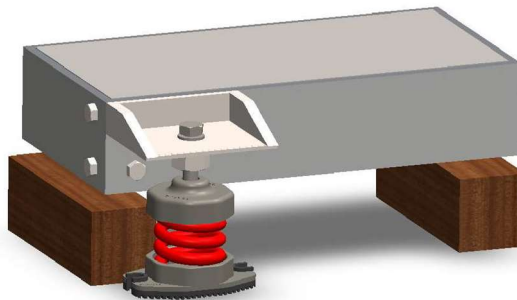
3. Install Vibration Isolator with mounting base, First, remove the Locking Cap Screw + Washer and when positioning or installing the vibration isolator, tighten the Locking Cap Screw +Washer. To attach the mounting base to the vibration isolator. (without to tighten it yet).



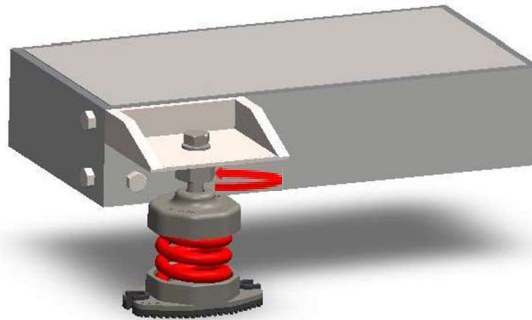
4. Transfer the weight of equipment to spring by turning each Leveling Bolt counterclockwise 2 full turns.



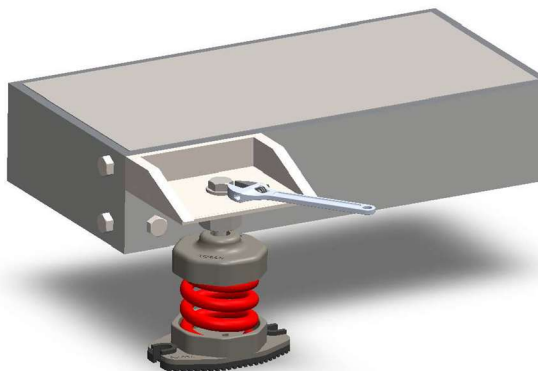
5. Repeat step 4 with each vibration isolator in order until spring is pressed and temporary support is loose enough to be able to removed. (In case some temporary support become loose, stop adjusting the Leveling Bolt of the Vibration Isolator at that point and adjusting the Leveling bolt of vibration isolator in another area instead until all temporary supports are loose enough to be removed.



6. Check level of equipment and adjust each vibration isolator so that is the equipment is level. By turning the Leveling Bolt counterclockwise, it will increase the level and turning clockwise will adjust the level down.



7. When the machine base floats on vibration isolator and is level, tight all the Locking Cap Screw.





---

**TOZEN INDUSTRIAL CO., LTD.**

3388/62 18TH FLOOR, SIRINRAT BLDG.,  
RAMA IV RD., BANGKOK 10110 THAILAND  
TEL : (66) 0-2029-0100  
FAX : (66) 0-2029-0111  
URL : [www.tozen.co.th](http://www.tozen.co.th)

**TOZEN CORPORATION**

8-4, ASAHY YOSHIKAWA  
SAITAMA 342-008 JAPAN  
TEL : 048-993-1030  
FAX : 048-993-1038